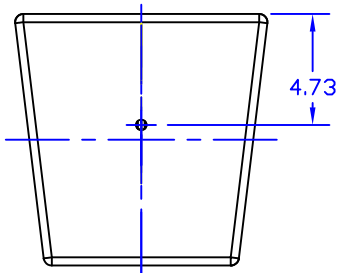
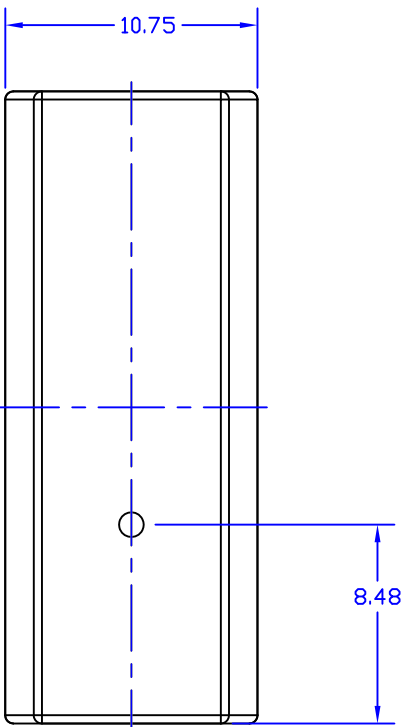
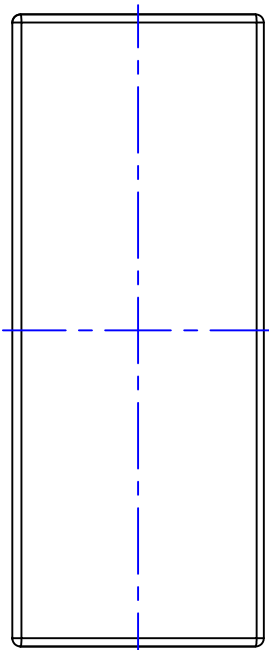
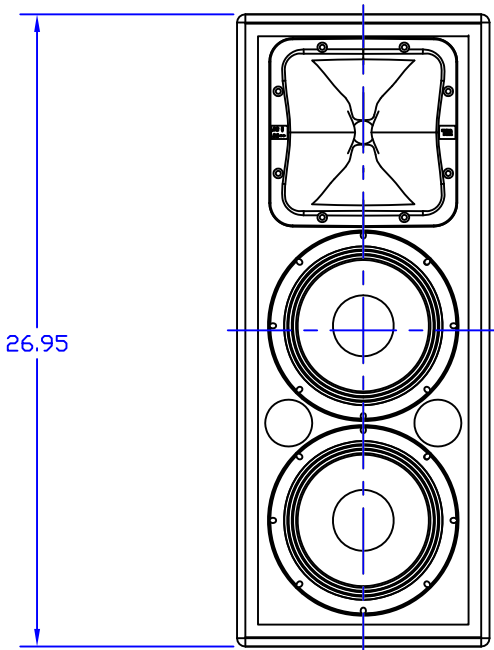
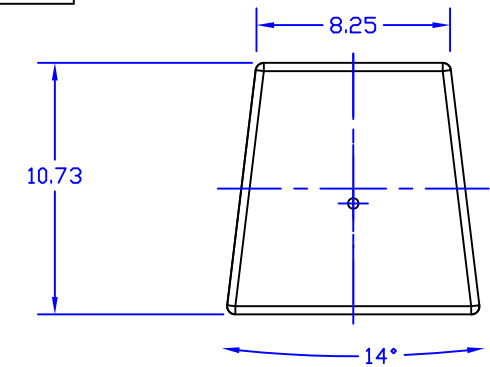


THESE DRAWINGS AND SPECIFICATIONS ARE THE PROPERTY OF JBL INCORPORATED THEY ARE ISSUED IN STRICT CONFIDENCE AND SHALL NOT BE REPRODUCED, COPIED, OR USED AS THE BASIS FOR MANUFACTURING OR SALE OF APPARATUS WITHOUT WRITTEN PERMISSION

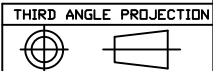
ALL MATERIAL SPECIFIED ON THIS DRAWING SHALL COMPLY WITH EUROPEAN DIRECTIVE 2002/95/EC [RoHS]

PART NO.	DESCRIPTION	REMARKS
XXXXX-001	AC28/XX-WRC	-----

REVISIONS						
CHG	LTR	DESCRIPTION	DRFT	CHK	DATE	APPR
----	A	PRELIMINARY RELEASE		--		--
----	B	UPDATE NOTE #3		--		SD



- NOTES:
- DRIVERS: LF - 2 X 228H 8" WOOFER, HF - 2408H-1 MOUNTED ON A PTDXX-HF1 WAVEGUIDE
 - SUSPENSION: 2 X M10 STAINLESS TREADED PLATES
 - FINISH: ALL DIMS SHOWN ARE UNFINISHED DIMS; ALLOW 0.06' PER SURFACE FOR WRC FINISH
 - GRILLE: 18 GA STAINLESS STEEL, WITH STAINLESS STEEL VAPOR BARRIER
 - INPUT: SEALED GLANDNUT WITH 6' 2 CONDUCTOR CAPTIVE CABLE
 - COLOR: STD GRAY; WHITE - WH AND BLACK -BL ARE AVAILABLE AT NO EXTRA COST
 - PLEASE SEE JBL PRO WEATHER RESISTANT CONFIGURATION DOCUMENT FOR FURTHER DETAILS



TOLERANCES (UNLESS OTHERWISE SPECIFIED)	
.XXX	± .005 INCH
.XX	± .010 INCH
.X	± .020 INCH
ANGULAR	± .030°
FRACTIONAL	± 1/32
* DIMENSIONS ARE INCHES	
* ALL DIMENSIONS ARE FINISHED DIMENSIONS	
* DO NOT SCALE DRAWING	

DRAWN	VK	JBL PROFESSIONAL A Harman International Company Northridge, California 91329 U.S.A.	
CHECKER			
ENGR	SD	TITLE AC28/XX-WRC	
MODELS USED ON		SIZE D	DRAWING NO. 1000365936
		SCALE 0.250	REV B
		SHEET 1 OF 1	